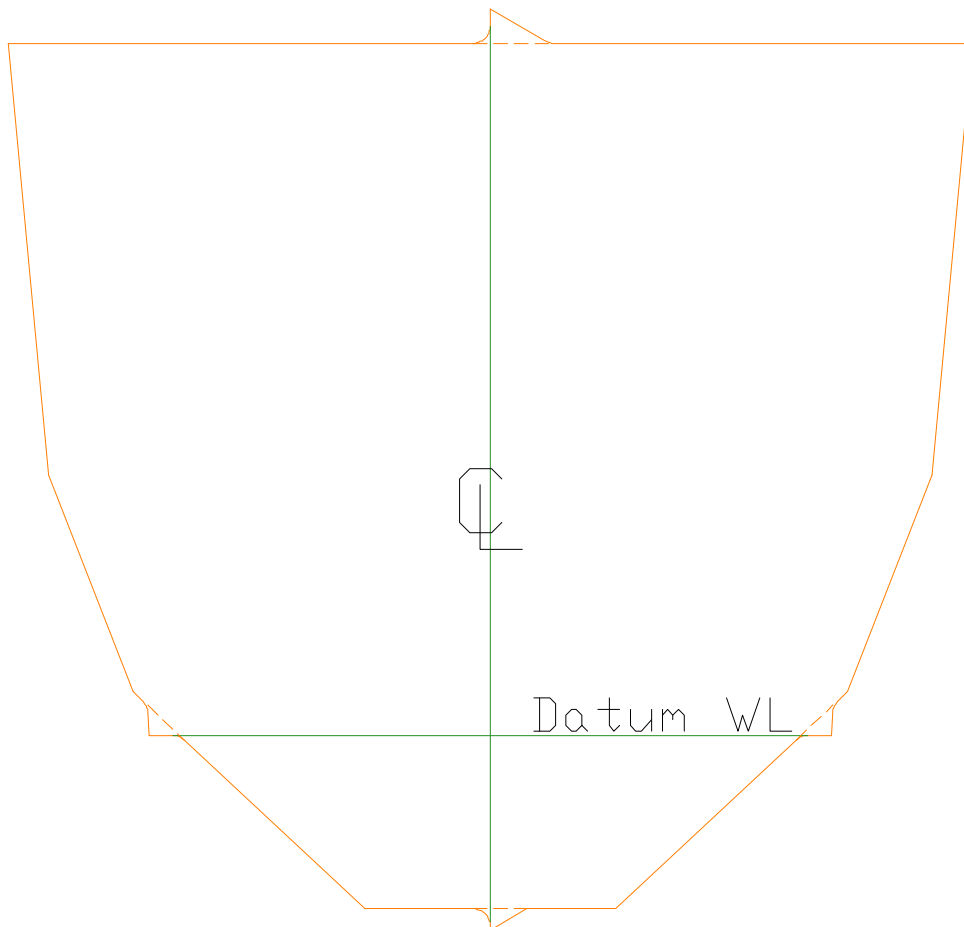


Jordan Boats Fife

Orr Cottage, 8 School Wynd, East Wemyss, Fife, KY1 4RN
Tel: 01592 560162

Cutting Notes for Stornoway 14

1. Scarph allowance is 40mm. Please refer to the Plank Line up diagram and Scarphing instructions for more detail.
2. Centre Lines and Datum Waterlines are marked on parts by small protrusions. This diagram shows this exaggerated. Once the lines have been marked, the protrusion can be planed off to give the correct shape of the part.



3. Locations for the frames are indicated by the drilled holes on the planks. These are also used to help lining the planks correctly.
4. Parts shown in Orange on the Sheet Layouts are cut to size per SFD plans. Items shown in Blue are cut oversize and will need to be cut to precise fit on the boat.

Should you have any problems with our cutting, please do not hesitate to call. Also, should you need advice while building, we are more than willing to provide assistance over the phone or by email, as is Paul Fisher.

We would also like to see pictures of the boat as it is being built and when finished, so that these can be added to our web site.

Thank you for your order, and enjoy your project!